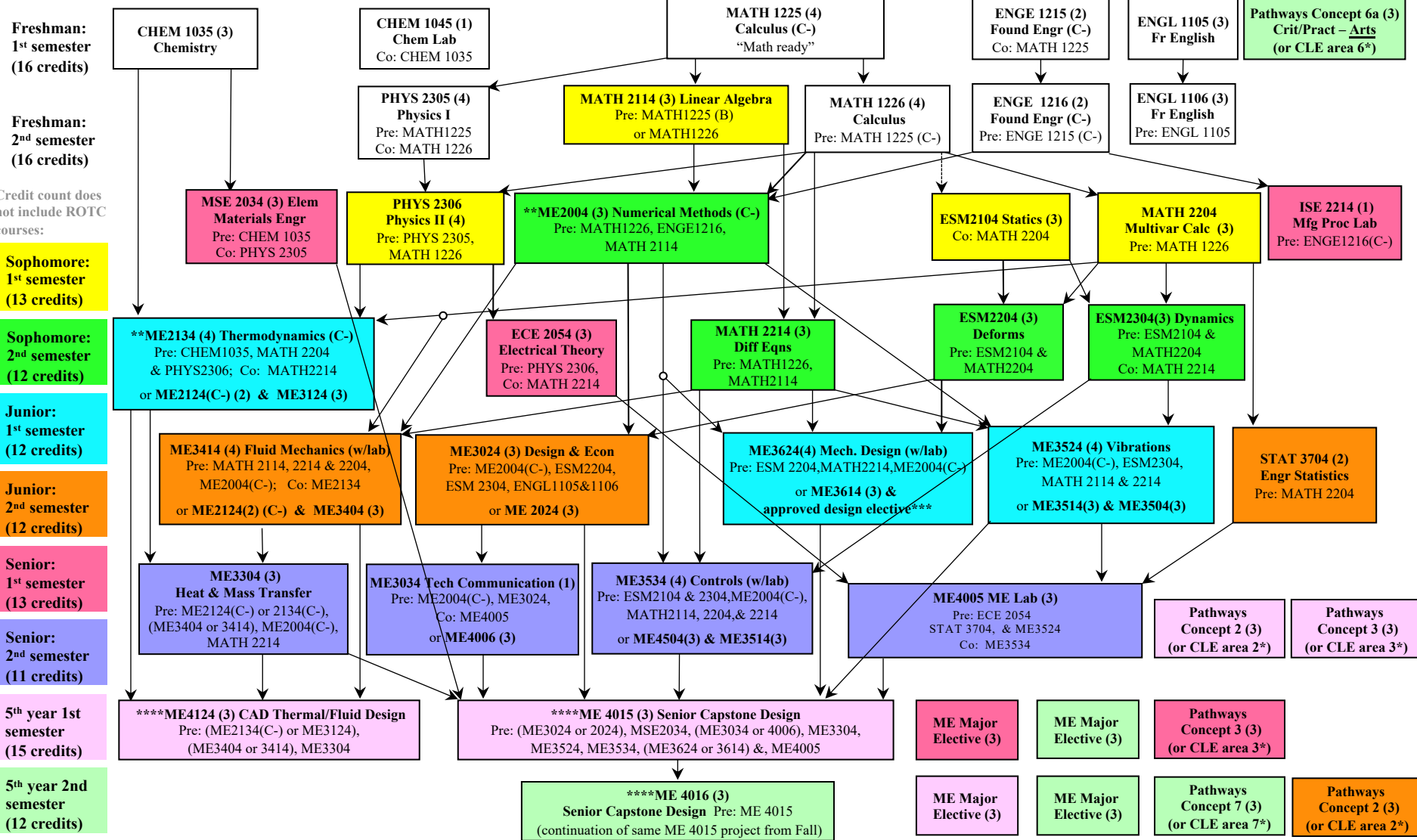


# B.S. in Mechanical Engineering Plan for Class of 2022/23 for Students in 5 year Military Program

Revised Sept 10, 2020- For more information please see [www.me.vt.edu](http://www.me.vt.edu)  
This is an unofficial planning tool only; please see the approved checksheets on the Registrar's website for official graduation requirements.



**Notes:**  
-Some required ROTC courses may also meet Pathways elective requirements.  
-Arrows denote prerequisites. Prerequisites of prerequisites must be met. Prerequisites may change without warning. Please check for updates in the undergraduate catalog & meet with an ME advisor  
\*Pathways vs. CLE electives based on date of entrance, not graduation.  
\*\*Must earn C- or higher in ME2004 & ME2134 to meet prerequisite & graduation requirements.  
\*\*\*Approved design elective may count towards ME major elective credits.  
\*\*\*\*Required senior courses are offered only once per year; ME4015 & ME4016 must be taken in order during the same academic year, beginning in Fall.

**Continued enrollment requirements:** see ME website for more information, [www.me.vt.edu](http://www.me.vt.edu).  
-2.000 minimum in-major GPA (all "ME" & "NSEG" courses)  
-2.000 minimum extended in-major GPA ("ME", "NSEG" courses & ESM2104, 2204, & 2304)  
-2.000 minimum overall GPA (all courses)  
-By 45 attempted required hours completion of: ESM2104, MATH2204 & MATH2114  
-By 60 attempted required hours completion of: MATH2214, ESM2304, & ME2004 (C-)  
-By 72 attempted required hours completion of: ME2134 (C-), ME3624 or ME 3024, and ME3524  
- By 93 attempted required credits completion ME4015 and ME4124