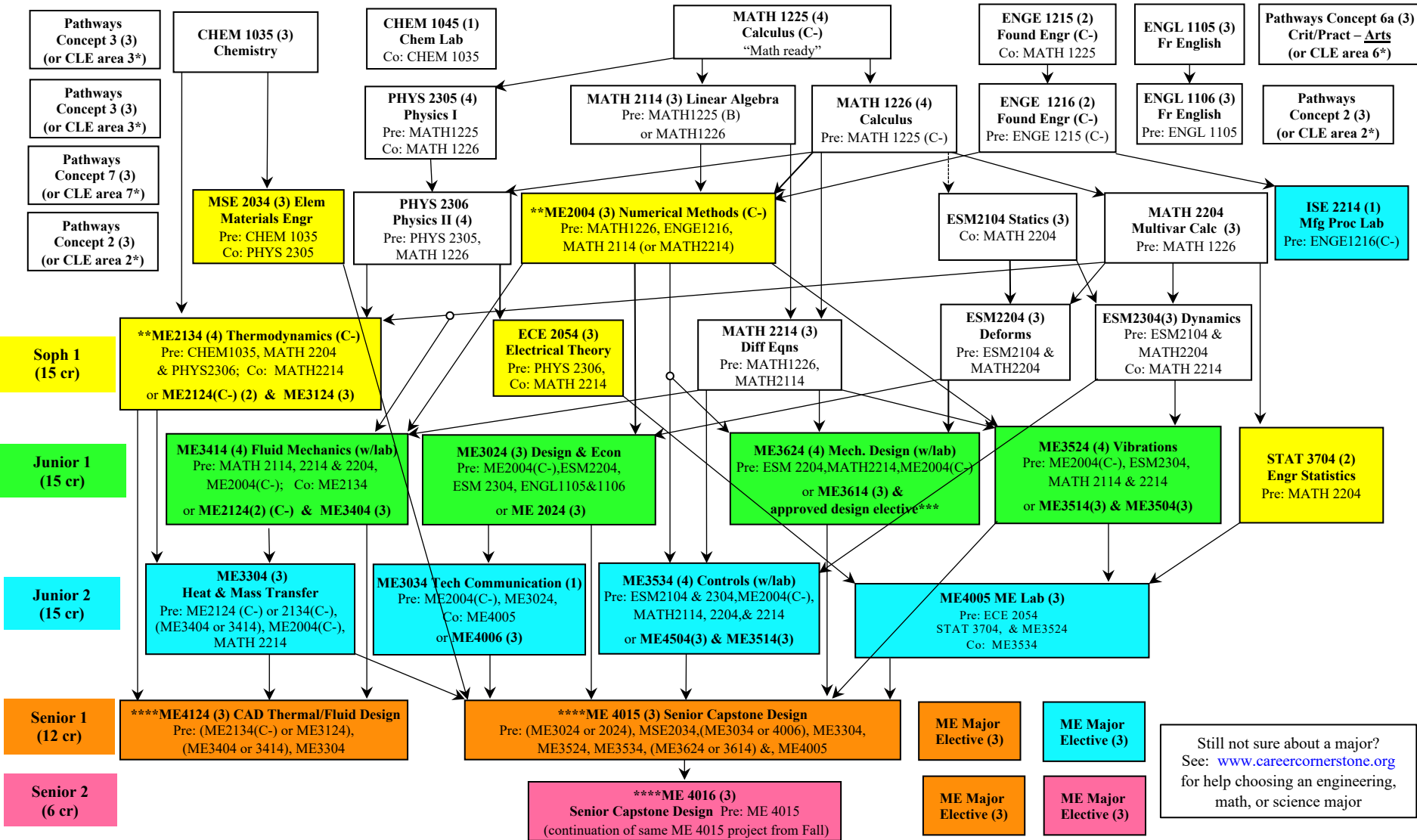


Mechanical Engineering – Suggested Co-op Plan for Transfers with VCCS AS Degree Starting

Student gets paid work experience for 1-2 summers plus Fall or Spring in an engineering-related job

Revised Sept 10, 2020- For more information please see www.me.vt.edu
 This is an unofficial planning tool only; please see the approved checksheets on the Registrar's website for official graduation requirements.



Notes: Courses in white boxes assumed to be done prior to entering VT.
 -Arrows denote prerequisites. Please check for updates in the undergraduate catalog. You are welcome to meet with an ME advisor to discuss your course plans.
 *Pathways vs. CLE electives based on date of entrance, not graduation. AS degree satisfies these elective requirements.
 **Must earn C- or higher in ME2004 & ME2134 to meet prerequisite & graduation requirements.
 ***Approved design elective may count towards ME major elective credits.
 ****Required senior courses are offered only once per year; ME4015 & ME4016 must be taken in order during the same academic year, beginning in Fall.

Continued enrollment requirements: see ME website for more information, www.me.vt.edu.
 -2.000 minimum in-major GPA (all "ME" & "NSEG" courses)
 -2.000 minimum extended in-major GPA ("ME", "NSEG" courses & ESM2104, 2204, & 2304)
 -2.000 minimum overall GPA (all courses)
 -By 45 attempted required hours completion of: ESM2104, MATH2204 & MATH2114
 -By 60 attempted required hours completion of: MATH2214, ESM2304, & ME2004 (C-)
 -By 72 attempted required hours completion of: ME2134 (C-), ME3624 or ME 3024, and ME3524
 - By 93 attempted required credits completion ME4015 and ME4124

Revised Sept. 10, 2020

Co-op Schedules Transfer Students with AS Degree:

See the color-coded degree path sheet on the previous page for which courses should be taken in each term.

Students gain a year of engineering-related work experience while spreading out their courses into an additional semester. Median hourly rates for our co-op students were over \$19/hour in 2018. Some students also received housing allowances or free housing and overtime pay.

In general, co-op students who work multiple terms with the same employer tend to:

- earn a higher hourly rate compared to summer interns who work for a single term only,
- participate in longer-term, more complex projects than interns
- get a broader experience with a company than an intern, possibly rotating between departments or job functions, and
- have a job offer from their employer before they start their senior year

Employers expect all engineering students to have related work experience before they start a full time job after graduation. Co-op students tend to get higher starting salaries and more job offers than students who do internships only or who have no work experience at all.

Students care more about how long it takes them to graduate and how high their grades are, but above a minimum GPA (sometimes as low as a 3.0), employers care more about prior work experience than grades, so don't underestimate the need for experience!

Note: Transfer students who were unable to meet entrance requirements to switch into Mechanical Engineering at the end of their first semester at Virginia Tech should consult with an academic advisor to see what options are available for them.

Co-op schedule with first work term spring of first year			
Year	Fall	Spring	Summer
2	Sophomore	Work	Work
3	Junior 1	Junior 2	Work
4	Senior 1	Senior 2	

Co-op schedule with first work term fall of second year			
Year	Fall	Spring	Summer
2	Sophomore	Junior 1	Work
3	Work	Junior 2	Work
4	Senior 1	Senior 2	

Be sure to add any course shown with white fill on the previous page that you haven't already completed before coming to Virginia Tech.

Pathways/CLE humanity electives should be complete with a VCCS AS degree. (Contact the Dean's Office in 212 Hancock with questions.)

Note that "Junior 2" courses must be taken during a Spring semester or over the summer (not recommended).