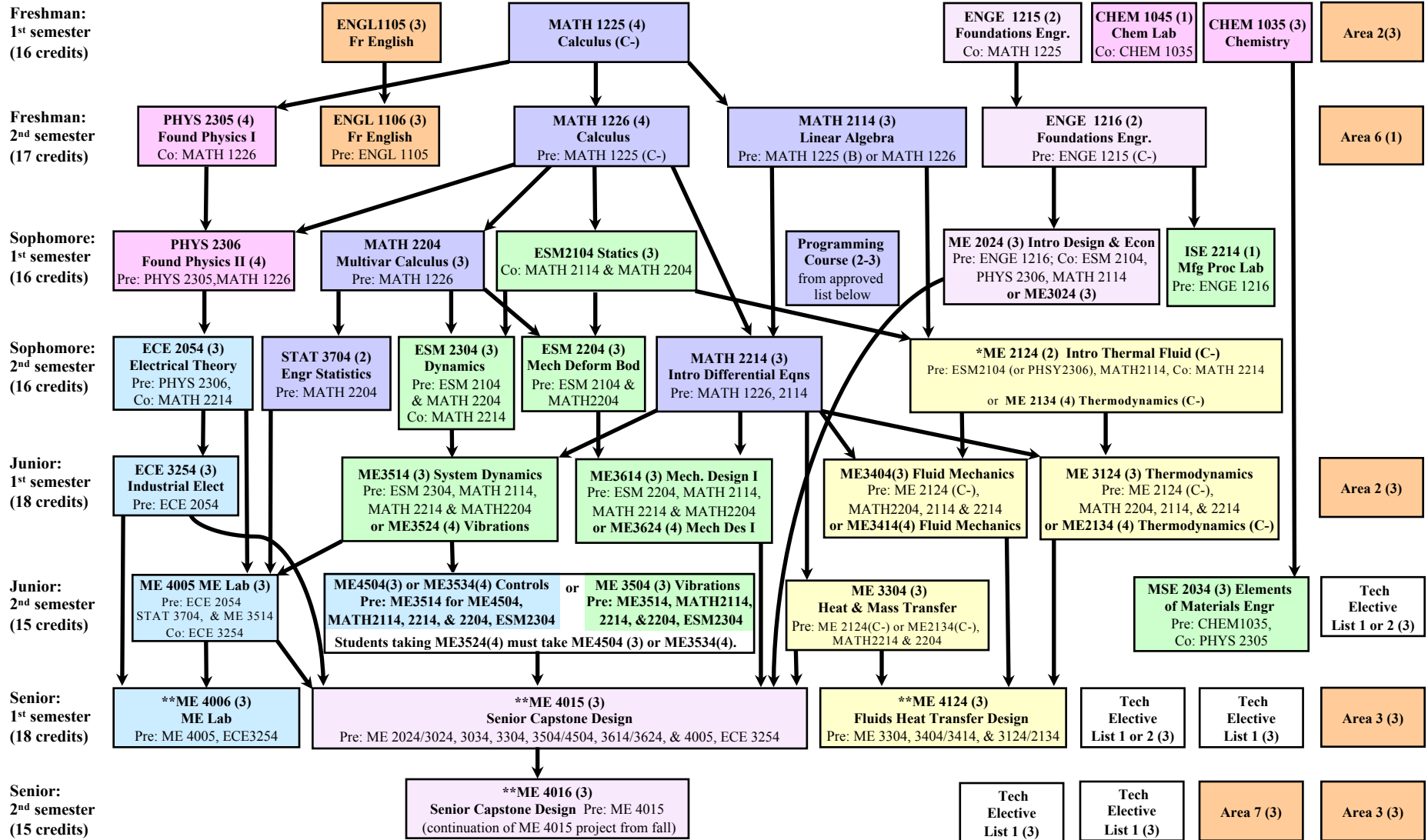


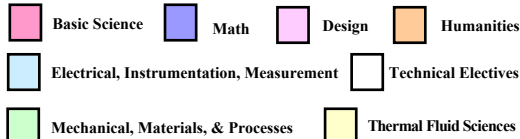
Still not sure about a major?
See: www.careercornerstone.org for help choosing an engineering or science major

B.S. in Mechanical Engineering DEGREE PATH SHEET - Class of 2021

Revised Nov. 18, 2019. For more information please see www.me.vt.edu
This is an unofficial planning tool only; please see the approved checksheets on the Registrar's website for official graduation requirements.



Color Code:



Notes:

-Arrows denote prerequisites. Prerequisites of prerequisites must be met. Prereqs may change without warning. Please check for updates in the undergrad catalog.
-Approved programming courses: ME 2004 (recommended), ENGE 2514, CS1044, CS1064, CS1114, ~ECE1574, ~AOE2074. ~Subject to major restrictions. **Students graduating 2022 or later MUST take ME2004.**
*Must earn C- or higher in ME2124 or ME2134 to meet prereq & grad requirements.
**Required senior courses are offered only once per year; ME4015 & ME4016 must be taken in order during the same academic year, beginning with Fall

Continued enrollment requirements:

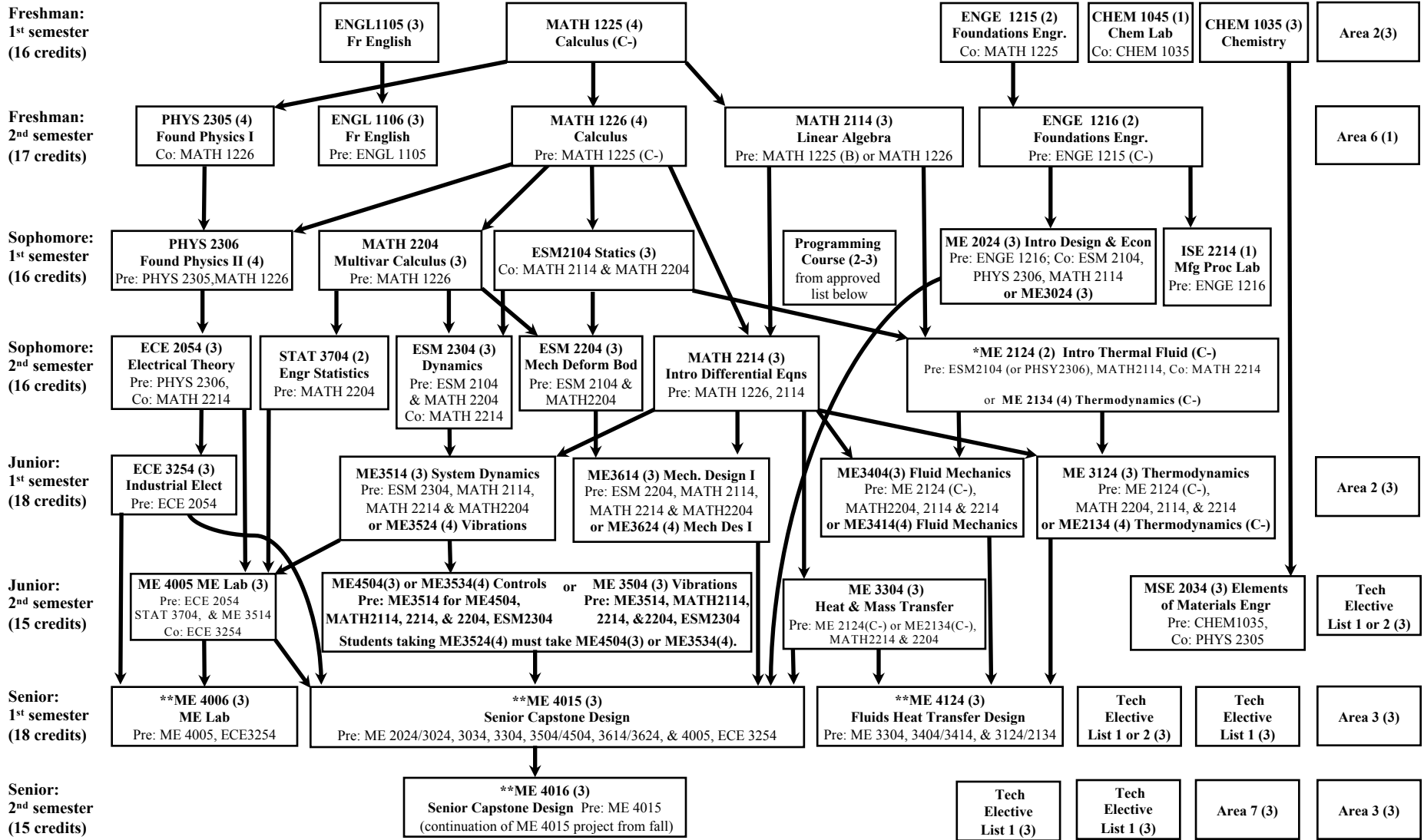
(see ME website for more information)
-2.000 minimum in-major GPA (all "ME" & "NSEG" courses)
-2.000 minimum extended in-major GPA (average of all "ME" and "NSEG" courses & ESM2104, ESM2204, & ESM2304)
-2.000 minimum overall GPA (all courses)
-By 45 attempted required hours complete: ESM2104, MATH2204 & 2114
-By 60 attempted required hours complete: MATH2214, ESM2304, & ME2124 (C-)
-By 72 attempted required hours complete: ME3514, ME3124, & ME3614
-By 90 attempted required credits complete: ME4006, 4015, & 4124

Still not sure about a major?
See: www.careercornerstone.org for help
choosing an engineering or science major

B.S. in Mechanical Engineering

DEGREE PATH SHEET - Class of 2021 or earlier

Revised Nov. 18, 2019- For more information please see www.me.vt.edu
This is an unofficial planning tool only; please see the approved checksheets
on the Registrar's website for official graduation requirements.



Notes:

-Arrows denote prerequisites. Prerequisites of prerequisites must be met. Prereqs may change without warning. Please check for updates in the undergrad catalog.
 -Approved programming courses: ME 2004, ENGE 2514, CS1044, CS1064, CS1114, ECE1574, AOE2074 (subject to major restrictions). **Students graduating 2022 or later MUST take ME2004.**
 *Must earn C- or higher in ME2124 or ME2134 to meet prereq & grad requirements.
 **Required senior courses are offered only once per year; ME4015 & ME4016 must be taken in order during the same academic year, beginning with Fall

Continued enrollment requirements: (see ME website for more information)
 -2.000 minimum in-major GPA (all "ME" & "NSEG" courses)
 -2.000 minimum extended in-major GPA (all "ME" & "NSEG" courses & ESM2104, 2204, & 2304)
 -2.000 minimum overall GPA (all courses)
 -By 45 attempted required hours complete: ESM2104, MATH2204 & 2114
 -By 60 attempted required hours complete: MATH2214, ESM2304, & ME2124 (C-)
 -By 72 attempted required hours complete: ME3514, ME3124, & ME3614
 -By 90 attempted required credits complete: ME4006, 4015, & 4124