

B.S. in Mechanical Engineering DEGREE PATH SHEET - Class of 2022

*Revised Sept. 11, 2020 - For more information please see www.me.vt.edu
This is an unofficial planning tool only; please see the approved check sheets
on the Registrar's website for official graduation requirements.*

Freshman:
1st semester
(16 credits)

Freshman:
2nd semester
(16 credits)

Sophomore:
1st semester
(17 credits)

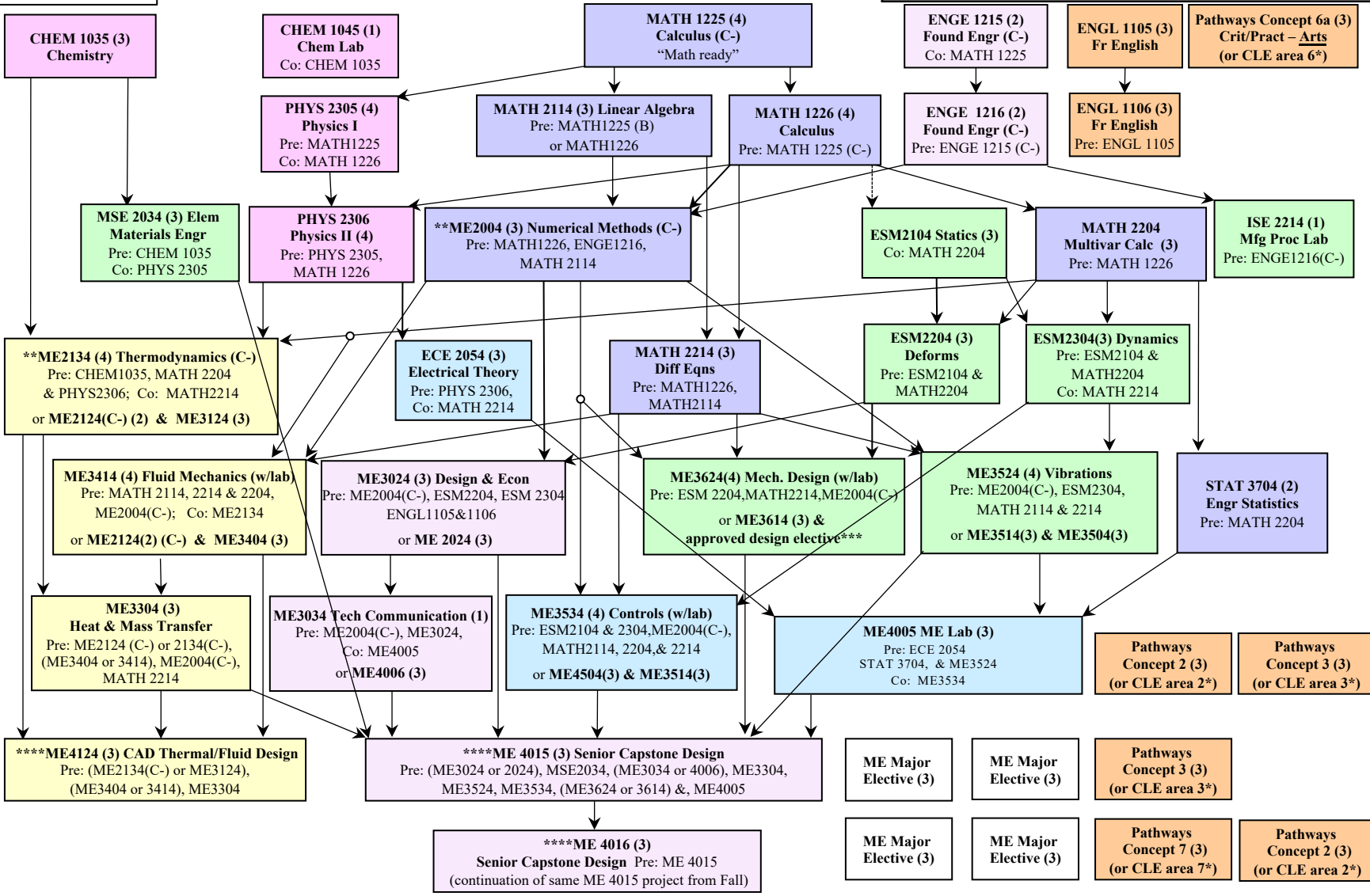
Sophomore:
2nd semester
(16 credits)

Junior:
1st semester
(17 credits)

Junior:
2nd semester
(17 credits)

Senior:
1st semester
(15 credits)

Senior:
2nd semester
(15 credits)



Color Code:

 Basic Science	 Math	 Design	 Humanities
 Electrical, Instrumentation, Measurement	 Major Electives	 Mechanical, Materials, & Processes	 Thermal Fluid Sciences

Notes:

- Arrows denote prerequisites. Prerequisites of prerequisites must be met. Prerequisites may change without warning. Please check for updates in the undergraduate catalog.
- **Pathways vs. CLE electives are based on date of entrance, not graduation.
- **Must earn C- or higher in ME2004 & ME2134 to meet prerequisite & graduation requirements.
- ***Approved design elective may count towards ME major elective credits.
- ****Required senior courses are offered only once per year; ME4015 & ME4016 must be taken in order during the same academic year, beginning in Fall.

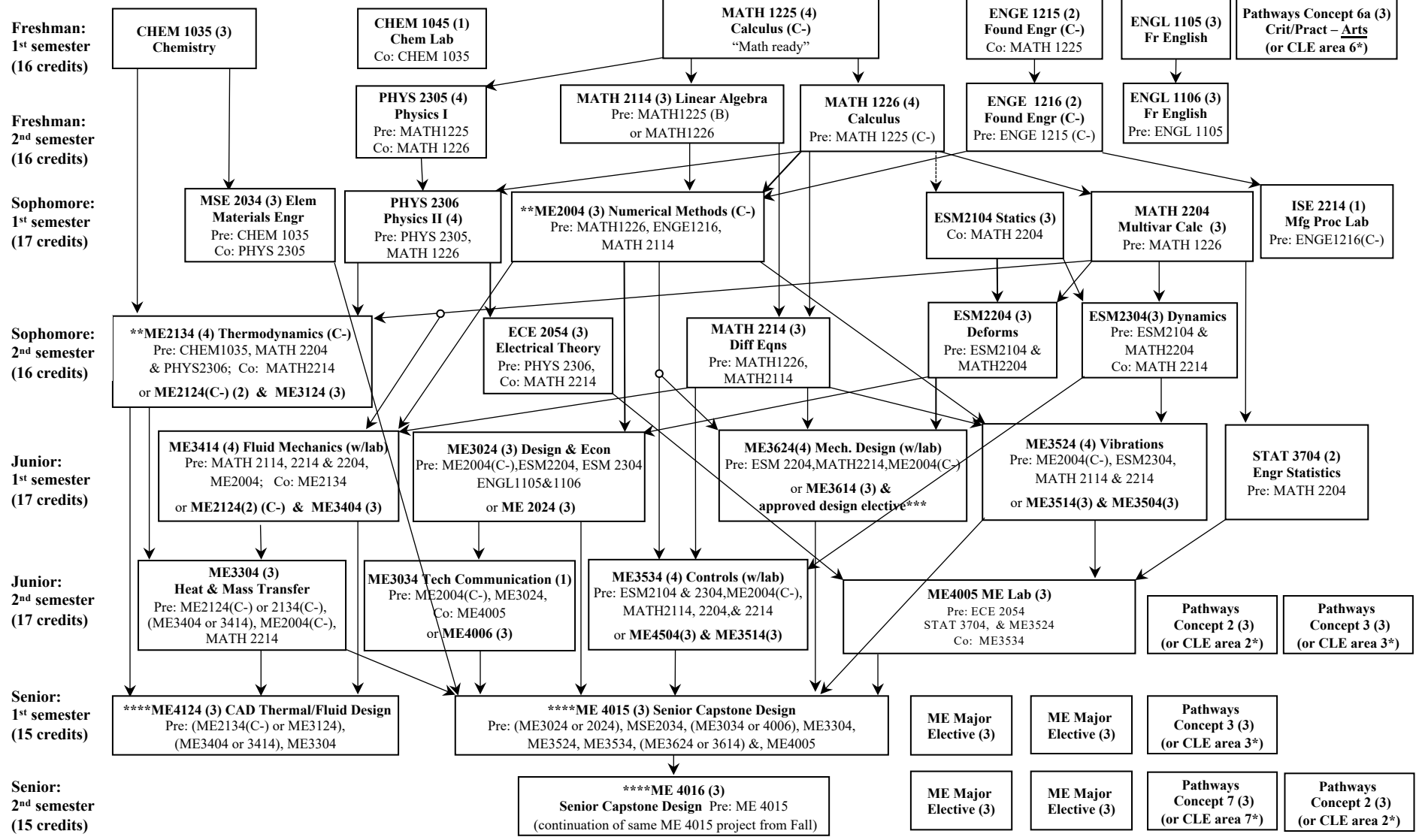
Continued enrollment requirements: see ME website for more information, www.me.vt.edu.

- 2.000 minimum in-major GPA (all "ME" & "NSEG" courses)
- 2.000 minimum extended in-major GPA ("ME", "NSEG" courses & ESM2104, 2204, & 2304)
- 2.000 minimum overall GPA (all courses)
- By 45 attempted required hours completion of: ESM2104, MATH2204 & MATH2114
- By 60 attempted required hours completion of: MATH2214, ESM2304, & ME2004 (C-)
- By 72 attempted required hours completion of: ME2134 (C-), ME3624 or ME 3024, and ME3524
- By 93 attempted required credits completion ME4015 and ME4124

Still not sure about a major?
See: www.careercornerstone.org for help choosing an engineering or science major

B.S. in Mechanical Engineering DEGREE PATH SHEET - Class of 2022

*Revised Sept. 11, 2020 - For more information please see www.me.vt.edu
This is an unofficial planning tool only; please see the approved check sheets on the Registrar's website for official graduation requirements.*



Notes:
-Arrows denote prerequisites. Prerequisites of prerequisites must be met. Prerequisites may change without warning. Please check for updates in the undergraduate catalog.
*Pathways vs. CLE electives based on date of entrance, not graduation.
**Must earn C- or higher in ME2004 & ME2134 to meet prerequisite & graduation requirements.
***Approved design elective may count towards ME major elective credits.
****Required senior courses are offered only once per year; ME4015 & ME4016 must be taken in order during the same academic year, beginning in Fall.

Continued enrollment requirements: see ME website for more information, www.me.vt.edu.
-2.000 minimum in-major GPA (all "ME" & "NSEG" courses)
-2.000 minimum extended in-major GPA ("ME", "NSEG" courses & ESM2104, 2204, & 2304)
-2.000 minimum overall GPA (all courses)
-By 45 attempted required hours completion of: ESM2104, MATH2204 & MATH2114
-By 60 attempted required hours completion of: MATH2214, ESM2304, & ME2004 (C-)
-By 72 attempted required hours completion of: ME2134 (C-), ME3624 or ME 3024, and ME3524
- By 93 attempted required credits completion ME4015 and ME4124