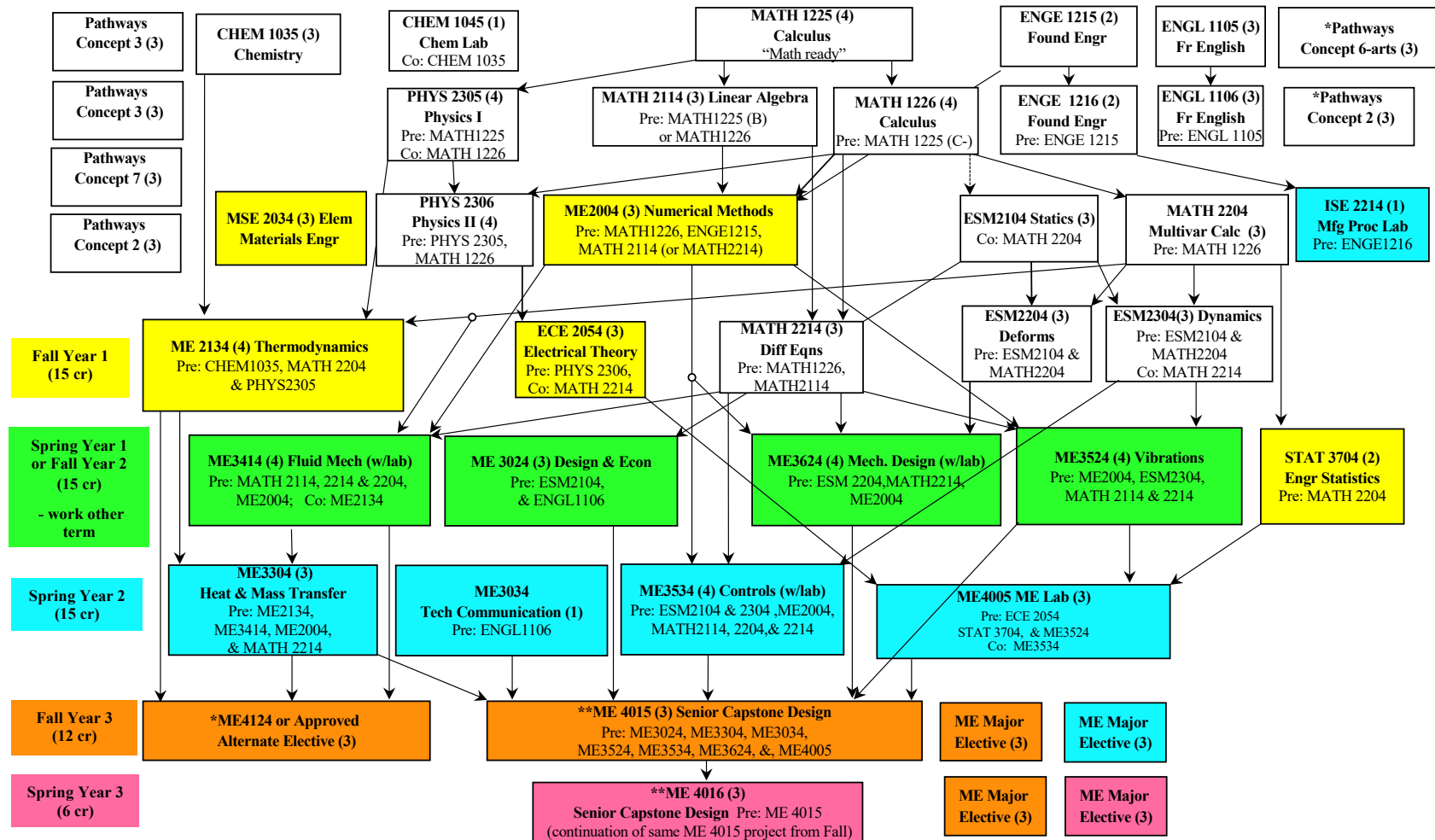


Still not sure about a major?
See: www.careercomerstone.org for help choosing an engineering or science major

Mechanical Engineering – Suggested Co-op Plan for Transfers with VCCS AS Degree Starting in Fall¹

Student gets paid work experience for 1-2 summers plus Fall or Spring 2024 in an engineering-related job.

Revised Sept., 2023. For more information please see www.me.vt.edu
This is an unofficial planning tool only; please see the approved checksheets on the Registrar's website for official graduation requirements.



Continued enrollment requirements: see ME website for more information, www.me.vt.edu.

Notes: Courses in white boxes assumed to be completed prior to starting at VT.
-Arrows denote prerequisites. Please check for updates in the undergraduate catalog.
¹Assumes that classes with white fill have been completed before entering ME Department; adjust as necessary. You are welcome to meet with an ME advisor to discuss your course plans.

*AS degree satisfies these and other Pathways elective requirements.

**Required senior courses are offered only once per year; ME4015 & ME4016 must be taken in order during the same academic year, beginning in Fall.

In-Major GPA	2.000 minimum (All ME, NSEG courses); if no in-major GPA, average 2.000 or higher in ESM2104, 2204, & 2304.
Overall GPA	2.000 minimum (All VT courses)
MATH2114, MATH2204, & ESM2104	Complete within 50 attempted required credits
ME2004	Complete within 2 semesters of entry into ME Department and complete within 69 attempted required credits
MATH2214 & ESM2304	Complete within 69 attempted required credits
ME2134	Complete within 3 semesters of entry into ME Department and complete within 87 attempted required credits
ME3254 & (ME3624 or ME3024)	Complete within 87 attempted required credits
ME4015	Complete within 104 attempted required credits