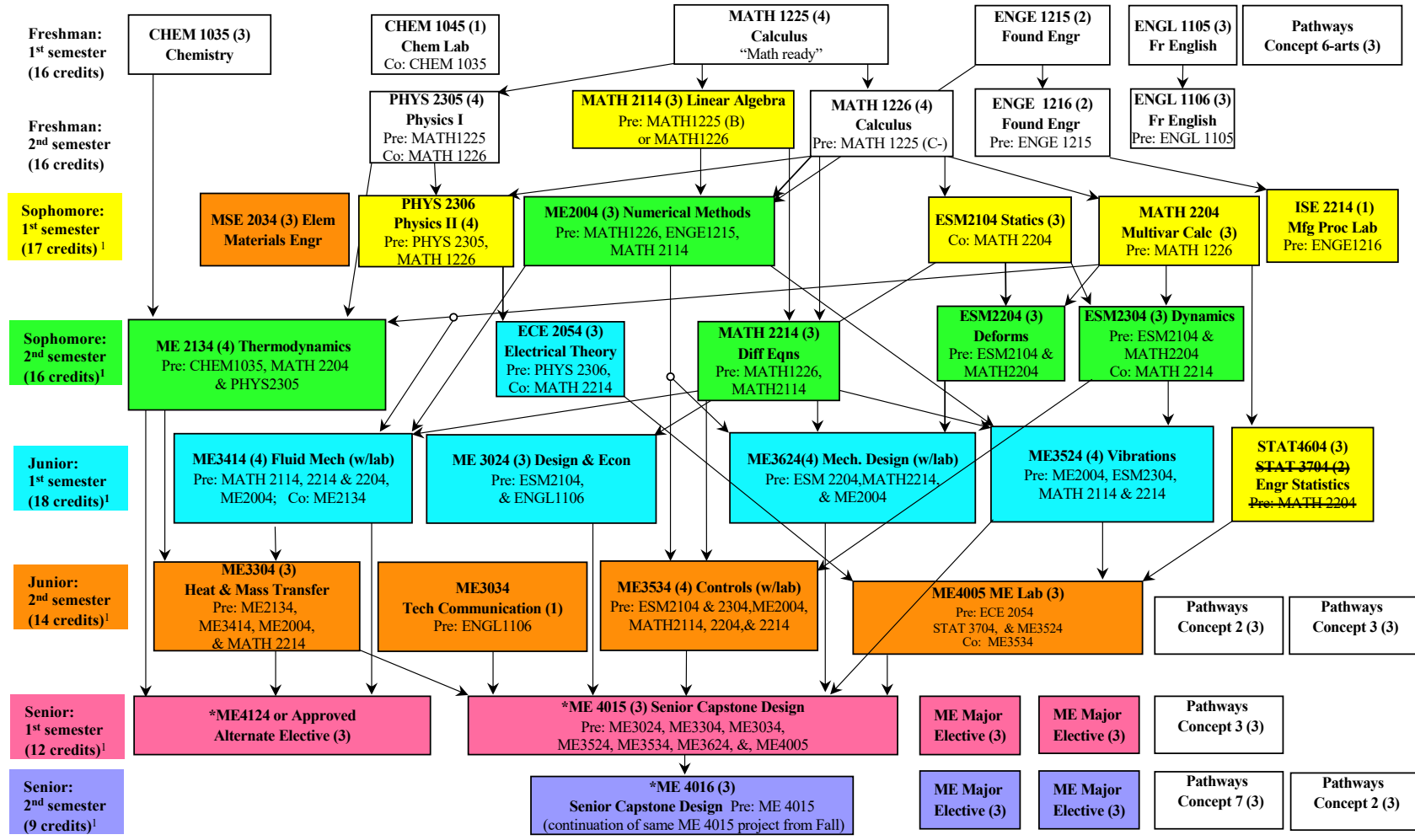


Still not sure about a major?
See: www.careercomerstone.org for help choosing an engineering or science major

B.S. in Mechanical Engineering Plan for Students Missing Linear Algebra (MATH2114)¹

*Revised Sept., 2023. For more information please see www.me.vt.edu
This is an unofficial planning tool only; please see the approved checksheets on the Registrar's website for official graduation requirements.*



Notes:
 -Arrows denote prerequisites. Prerequisites of prerequisites must be met. Prerequisites may change without warning. Please check for updates in the undergraduate catalog & meet with an ME advisor
 *Required senior courses are offered only once per year; ME4015 & ME4016 must be taken in order during the same academic year, beginning in Fall.
¹Assumes that classes with white fill have been completed before entering ME Department; adjust as necessary.
 -Credit counts per term do NOT include Pathways electives. Be sure to include missing electives in your plans.

Continued enrollment requirements: see ME website for more information, www.me.vt.edu.

In-Major GPA	2.000 minimum (All ME, NSEG courses); if no in-major GPA, average 2.000 or higher in ESM2104, 2204, & 2304.
Overall GPA	2.000 minimum (All VT courses)
MATH2114, MATH2204, & ESM2104	Complete within 50 attempted required credits
ME2004	Complete within 2 semesters of entry into ME Department and complete within 69 attempted required credits
MATH2214 & ESM2304	Complete within 69 attempted required credits
ME2134	Complete within 3 semesters of entry into ME Department and complete within 87 attempted required credits
ME3254 & (ME3624 or ME3024)	Complete within 87 attempted required credits
ME4015	Complete within 104 attempted required credits