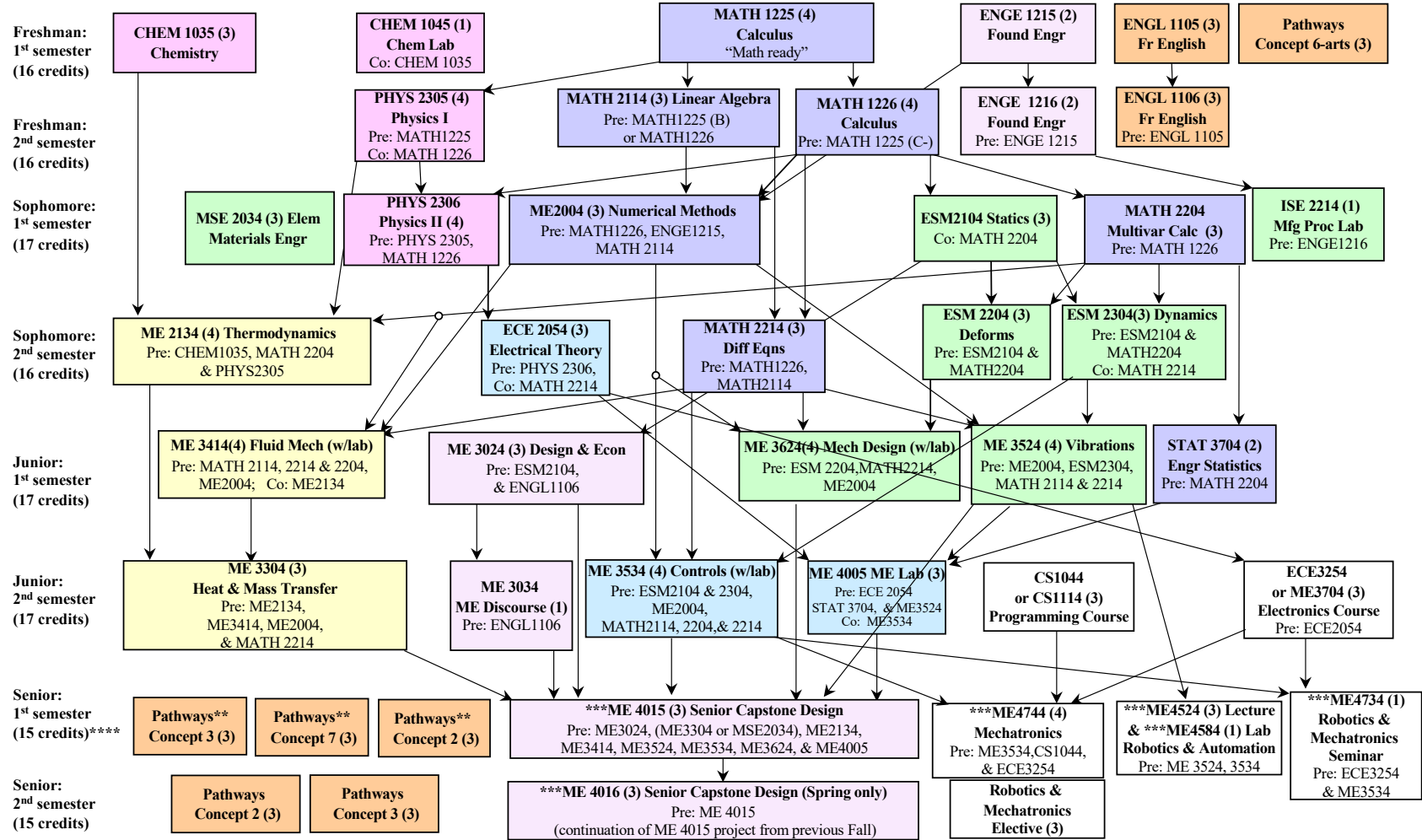


Still not sure about a major?
See: www.careercornerstone.org for help choosing an engineering or science major

B.S. in Mechanical Engineering – Robotics & Mechatronics Major

Revised January 2025. For more information, please see www.me.vt.edu. This is an unofficial planning tool only; please see the approved checksheets on the Registrar's website and the Undergraduate Catalog for official graduation requirements based on date of entry to Virginia Tech..



Color Code:

- Basic Science
- Math
- Design
- Humanities
- Electrical, Instrumentation, Measurement
- Major Courses
- Mechanical, Materials, & Processes
- Thermal Fluid Sciences

Notes:
 Arrows denote prerequisites. Prerequisites of prerequisites must be met. Prerequisites may change without warning - see undergrad catalog for updates.
 **Combine Pathways Concept 7 with Concept 2 or 3 to eliminate 3 credits.
 ***Senior courses are offered only once per year; ME4015 & ME4016 must be taken in order during the same academic year, beginning in Fall.

Satisfactory Progress Towards Degree (PTD) requirements: see ME website for more information, www.me.vt.edu.

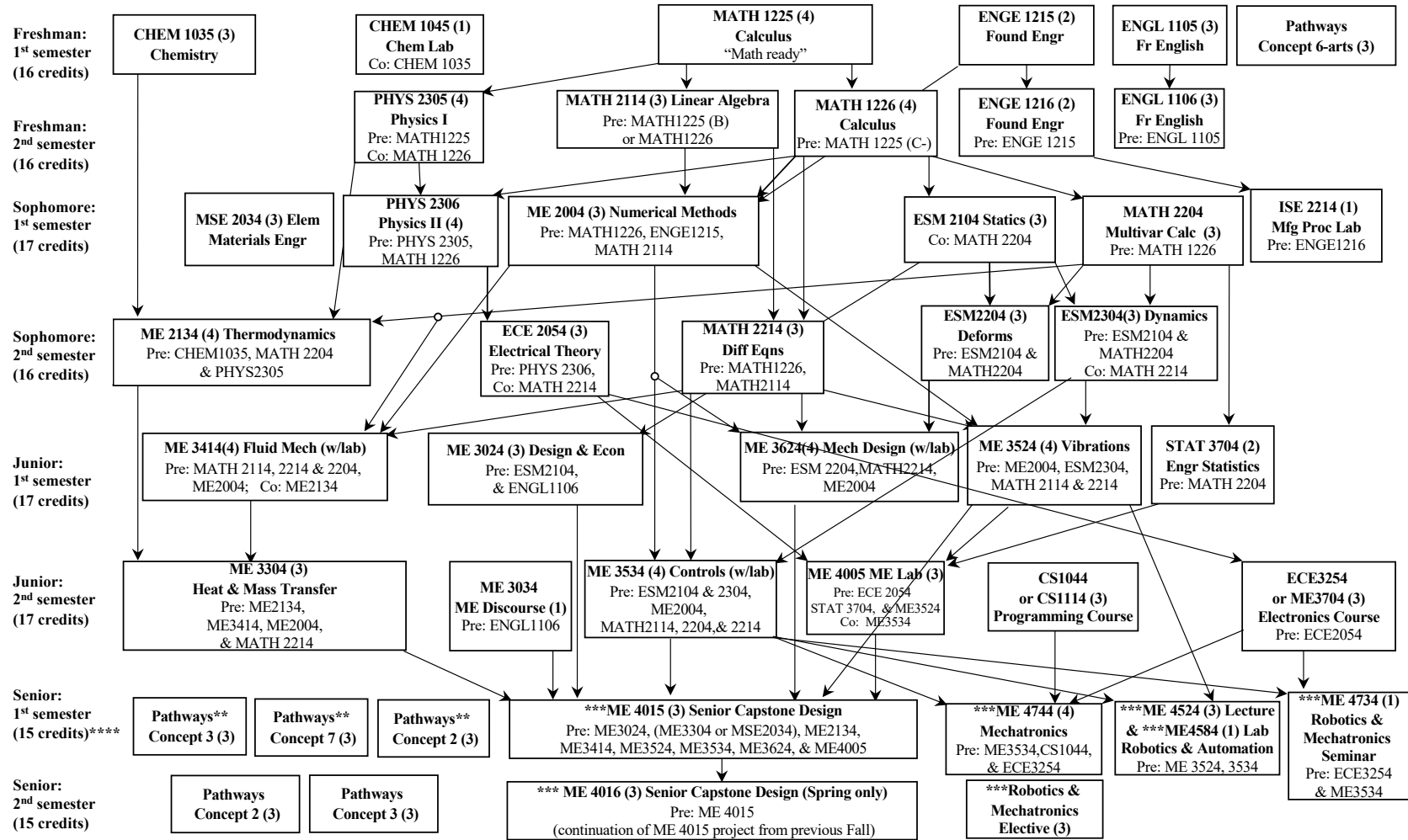
Overall GPA	2.000 or higher (all courses taken at VT)
Classis In-Major GPA	2.000 or higher (all ME, NSEG courses) for students following 2023-24 or earlier checksheet; if no grades have been earned in ME or NSEG courses, must average 2.000 or higher on ESM courses until an ME/NSEG GPA exists
In-Major GPA	2.000 or higher (all ESM, ME, NSEG courses) for students following 2024-25 catalog or later catalog
All courses	Must pass within first 3 attempts including attempts ending in a W or WP grade
MATH2114, MATH2204, & ESM2104	Complete within 50 attempted required credits*
ME2004, ESM2304, MATH2214	Complete within 69 attempted required credits*
ME2134, ME3524, & (ME3624 or 3024)	Complete within 87 attempted required credits*
ME4015	Complete within 104 attempted required credits*

*Attempted required credits include all attempts required for the BSME degree showing up on a student's transcript including attempts ending in W or WP grades. The total does not include free electives, technical electives, or Pathways electives. Transfer courses used to cover a required course at VT count towards the attempted required credit total.

Still not sure about a major?
See: www.careercornerstone.org for help choosing an engineering or science major

B.S. in Mechanical Engineering – Robotics & Mechatronics Major

Revised January 2025. For more information, please see www.me.vt.edu. This is an unofficial planning tool only; please see the approved check sheets on the Registrar's website and the Undergraduate Catalog for official graduation requirements based on date of entry to Virginia Tech..



Notes:

Arrows denote prerequisites. Prerequisites of prerequisites must be met. Prerequisites may change without warning - see undergrad catalog for updates.

**Combine Pathways Concept 7 with Concept 2 or 3 to eliminate 3 credits.

***Senior courses are offered only once per year; ME4015 & ME4016 must be taken in order during the same academic year, beginning in Fall.

Satisfactory Progress Towards Degree (PTD) requirements: see ME website for more information, www.me.vt.edu.

Overall GPA	2.000 or higher (all courses taken at VT)
Classis In-Major GPA	2.000 or higher (all ME, NSEG courses) for students following 2023-24 or earlier checksheet; if no grades have been earned in ME or NSEG courses, must average 2.000 or higher on ESM courses until an ME/NSEG GPA exists
In-Major GPA	2.000 or higher (all ESM, ME, NSEG courses) for students following 2024-25 catalog or later catalog
All courses	Must pass within first 3 attempts including attempts ending in a W or WP grade
MATH2114, MATH2204, & ESM2104	Complete within 50 attempted required credits*
ME2004, ESM2304, MATH2214	Complete within 69 attempted required credits*
ME2134, ME3524, & (ME3624 or 3024)	Complete within 87 attempted required credits*
ME4015	Complete within 104 attempted required credits*
*Attempted required credits include all attempts required for the BSME degree showing up on a student's transcript including attempts ending in W or WP grades. The total does not include free electives, technical electives, or Pathways electives. Transfer courses used to cover a required course at VT count towards the attempted required credit total.	